

# Household drinking water in developing countries: a systematic review of microbiological contamination between source and point-of-use

Jim Wright<sup>1</sup>, Stephen Gundry<sup>1</sup> and Ronan Conroy<sup>2</sup>

<sup>1</sup> Water and Environmental Management Research Centre, University of Bristol, Bristol, UK

<sup>2</sup> Department of Epidemiology and Public Health Medicine, Royal College of Surgeons in Ireland, Dublin, Ireland

## Summary

**OBJECTIVE** To assess the extent and causes of microbiological contamination of household drinking water between source and point-of-use in developing countries.

**METHODS** A systematic meta-analysis of 57 studies measuring bacteria counts for source water and stored water in the home to assess how contamination varied between settings.

**RESULTS** The bacteriological quality of drinking water significantly declines after collection in many settings. The extent of contamination after water collection varies considerably between settings, but is proportionately greater where faecal and total coliform counts in source water are low.

**CONCLUSIONS** Policies that aim to improve water quality through source improvements may be compromised by post-collection contamination. Safer household water storage and treatment is recommended to prevent this, together with point-of-use water quality monitoring.

**keywords** coliform bacilli, developing countries, meta-analysis, water microbiology, water purification, household, recontamination, storage

## Introduction

Water-related diseases continue to be one of the major health problems globally. An estimated 4 billion cases of diarrhoea annually represented 5.7% of the global disease burden in the year 2000 (WHO 2002). One of the major strategies for tackling this problem is the installation of protected sources such as boreholes, standpipes or wells to provide water of better quality. However, such communal facilities are located some distance from the home, requiring collection and transport from the source and subsequent storage of water within the household. It has frequently been observed that the microbiological quality of water in vessels in the home is lower than that at the source, suggesting that contamination is widespread during collection, transport, storage and drawing of water (Van Zijl 1966; Lindskog & Lindskog 1988). This contamination may lessen the health benefits of water source improvements.

This paper draws together the evidence from *all studies* of household water contamination between source and point-of-use and identifies how water contamination varies between the different study settings. Reported changes in water quality between source and point-of-use are summarized through a literature review and water quality

changes investigated in relation to study design, quality and setting characteristics.

## Methods

### Criteria for inclusion

The review considers only field-based studies in developing countries where water is transported from a source outside the home and then stored within the household. Findings about water quality in non-domestic or emergency settings, such as hospitals, schools or refugee camps, are excluded from the review. The review is further restricted to microbiological measures of contamination and excludes chemical aspects of water quality. Studies using more unusual microbiological testing measures (e.g. somatic coliphages) are not included in the review because there are too few studies to make meaningful generalizations. The review is therefore limited to coliform bacteria (total coliforms, faecal coliforms and *Escherichia coli*). The review is only concerned with field-based studies and does not cover any laboratory-based findings.

The included studies reported water quality results at source and at point-of-use for the sampled households in

J. Wright *et al.* **Review of drinking water contamination**

developing country communities. The results of these studies are usually presented as an aggregate measure e.g. mean *E. coli* per 100 ml, proportion of point-of-use samples with faecal coliforms, etc. Sample sizes are available for most studies.

**Search strategy for identification of studies**

The search for relevant literature was primarily through on-line bibliographic databases (PubMed; Web of Science and the African Index Medicus). Key words included 'water + coliform + household', 'water + coliform + storage', 'water + coliform + vessel', 'water + coliform + stored' and the same combination of search words using 'coli' instead of 'coliform'. Abstracts highlighted by key word searches were scanned for relevance and papers photocopied as necessary. The so-called 'ancestry approach', in which references from key papers are systematically traced, was also used for two previous review papers (Vanderslice & Briscoe 1993; Mintz *et al.* 1995). In addition, the Journal of Diarrhoeal Diseases Research was hand-searched for relevant articles. Non-peer reviewed publications were also hand-searched, including the 'WEDC' conference series from 1994 onwards, 'Waterlines' and 'Dialogue on Diarrhoea'. In terms of language, the search was restricted to papers published in English, French or Spanish and in terms of publication date, to papers published before 2003. In addition to findings from the literature, unpublished results from our own fieldwork in Venda district, South Africa are also included in the analysis of contamination between source and point-of-use.

Abstracts and other details of relevant studies were collated in a bibliographic database. A spreadsheet was also created for each of the three study types described above. Each spreadsheet comprised a series of headings against which the characteristics of each study could be recorded. Study characteristics were in all cases recorded by the lead author in these spreadsheets. Once the spreadsheet had been compiled, it was exported to a statistical package (Stata) for analysis.

In eight studies, results were published in too brief a form to be usable for the review. In such cases, where work had been published since 1980, an attempt was made to contact the lead author of the publication to obtain more detailed study results.

**Statistical methods**

We used a set of statistical techniques known as meta-analysis to investigate the results of the observational studies identified through the literature review. However,

the statistical combination of data from observational studies is known to produce spurious results (Egger *et al.* 1998) and therefore no attempt was made to assess the overall, typical contamination pattern across all these studies. Rather, the meta-analysis used here investigated how bacteriological contamination varied between the studies and to what extent this variation was explained by study characteristics. We used a five-stage approach to the analysis.

*(i) Identify study characteristics*

The studies could be differentiated by their different settings, their basic design and their perceived quality. Each of the different characteristics within these three headings has been suggested as an explanatory variable for observed differences in contamination.

*Setting*

Source contamination: The percentage of samples testing positive for indicator bacteria may decrease after collection from highly contaminated sources because of die-off as bacteria compete for limited oxygen and nutrients in the water (Momba & Notshe 2003). Conversely, the percentage of positive samples may increase after water is collected and stored from safe sources because of contamination through hands, unwashed containers and dippers. The geometric mean indicator bacteria count and percentage of samples positive for such bacteria were therefore used to measure source contamination.

Use of protected water source: At least one study (Lindskog & Lindskog 1988) has shown that households may assume that water from protected sources is safe and boil it less often.

Sanitation: Where basic sanitation is lacking, there is more likelihood of indicator bacteria from faeces being introduced into stored water (Ologe 1989).

Use of uncovered vessels: Using uncovered water containers is likely to increase water contamination between source and point-of-use as hands are dipped into vessels to scoop a cupful of water (Chidavaenzi *et al.* 1998).

Storage vessel material: In one study, earthenware vessels showed significantly higher levels of contamination (Vanderslice & Briscoe 1993).

Urban *vs.* rural: The study location (urban or rural) was also assessed, as the urban studies generally took place in high density areas where poor environmental health might increase post-collection contamination of water.

Our characterization of the different studies was limited by the data collected in the original fieldwork. Variables such as the time since water was collected (Roberts *et al.* 2001), the method of extracting water (Vanderslice &

J. Wright *et al.* **Review of drinking water contamination**

Briscoe 1993), and the use of separate vessels for storage and transport (Lindskog & Lindskog 1988) have also been shown to affect water recontamination. However, such characteristics were recorded only in a minority of the studies we reviewed and so could not be adequately analysed in this review.

**Study design**

**Disease-oriented study:** Studies were identified that concentrated sampling effort on households with cases of disease such as diarrhoea (typically through a case control design). By concentrating on households where water-borne disease was present, such studies seemed more likely to identify higher levels of water contamination between source and point-of-use.

**Intervention-related study:** In some instances, we used baseline data on water contamination from intervention studies involving new water sources, sanitation or hygiene education. Where no baseline data were collected, we used control group data. This characteristic was also recorded, so that we could test whether contamination patterns were different in such study populations (e.g. because villages with particularly unhygienic environments were more likely to be selected for intervention studies).

**Study quality**

Whether or not the study was published in a refereed journal was used as a measure of the quality of each of the studies. These characteristics were subsequently used in a meta-regression analysis as described in (v) below.

*(ii) Indicator bacteria used*

All of the studies analysed used one or more of the following three indicator bacteria: (1) total coliforms which are Gram-negative bacteria that ferment lactose at 35–37 °C within 24–48 h; (2) faecal thermo-tolerant coliforms which are a subset of total coliform bacteria that ferment lactose at 44–45 °C and (3) *E. coli* which are exclusively faecal in origin, are a sub-group of the faecal coliforms that produce the enzyme B-galactosidase and not urease. WHO guidelines state that none of these bacteria should be detectable in a 100-ml water sample (WHO 1997). Of these bacteria, *E. coli* are regarded as the most reliable indicator of faecal contamination and total coliforms as the least reliable indicator.

*(iii) A common basis for measuring contamination*

Although it was possible to categorize studies by characteristic and indicator bacteria, methods of reporting

indicator bacteria counts varied depending on the quality of water under investigation. High bacteria count studies were typically where over 90% of source samples tested positive for the bacteria in question, in which case counts were generally reported as geometric means. It was thus decided to split the studies in each characteristic-indicator pair according to whether bacteria counts were high or low and use two different techniques to bring each to a common basis of measurement. These techniques were: in settings where bacterial counts were low, log odds ratios were calculated using the Dersimonian and Laird random effects method from the numbers of positive and negative samples at source and point-of-use. Where most or all of the water samples in a study were contaminated, standardized mean differences (Egger *et al.* 1997b) were calculated from the means and standard deviations of the log-transformed bacteria counts using the Cohen method. The standardized mean difference is the difference between the mean bacteria count at source and point-of-use, divided by the pooled standard deviation for both sets of water samples. For most studies, log-transformed counts were used because the distribution of bacteria counts in water is generally positively skewed (exceptions are noted in Table 1).

*(iv) Testing for significant variation between studies*

From stage (ii) to (iii), we grouped the available studies into six categories according to the three types of indicator bacteria and two levels of contamination. As there were no 'high bacteria count' studies of *E. coli*, one category was effectively empty leaving a total of five categories of studies. For each of these groups, we tested to see if there were significant differences in contamination patterns between studies using a heterogeneity test.

A separate analysis was performed for each of the three indicator organisms because their abundance in water and their origins may be different. For example, total coliforms are known to originate from decaying vegetation whereas *E. coli* are not and consequently patterns of contamination may vary between the three types of organism. Furthermore, total coliforms are more numerous than faecal coliforms, which are more numerous than *E. coli* and so bacteria counts vary for each indicator. 'High' and 'low' bacteria count studies were analysed separately because the method of assessing the change in water quality was different for these two types of study.

*(v) Explaining the variation in contamination between studies*

Where there were significant differences in contamination between studies, we used a technique known as meta-regression to see whether the study characteristics could

J. Wright *et al.* Review of drinking water contamination**Table 1** Characteristics of studies included in the review, grouped by type of indicator bacteria

Study	Setting						Design		Quality		Notes
	Urban/ rural	% with adequate sanitation	% with covered vessels	% with earthen- ware vessels	% with protected sources	% source samples contaminated	Intervention study	Sampling focuses on disease cases	Published in referred journal		
<i>Escherichia coli</i> – low bacteria counts (15 studies)											
AQUAPOL	Rural	100	0	0	42	25	N	N	N		
Dunne <i>et al.</i> (2000)	Urban		63	33	100%	1%	N	N	Y		
Echeverria <i>et al.</i> (1987)	Urban			100	100	0	N	Y	Y		
El Attar <i>et al.</i> (1982)	Rural		100	100	100	0	N	N	Y		
Genthe <i>et al.</i> (1997)	Urban	88	33	0	86	3	N	Y	Y		
Han <i>et al.</i> (1989)	Urban			N/A	50	0	N	N	Y		
Lloyd-Evans <i>et al.</i> (1984)	Urban	100			100	0	N	N	Y		
Morin <i>et al.</i> (1990)	Rural				100	21	Y	N	N		
Pinfold (1990)	Rural	90			34	68	N	N	Y	F	
Quick <i>et al.</i> (1996)	Urban	0	25	0	0	100	Y	N	Y		
Simango <i>et al.</i> (1992)	Rural		53		100	28	N	N	Y		
Reller <i>et al.</i> (2001)	Urban		49	1	100	8	N	Y	Y		
Quick <i>et al.</i> (2002)	Urban	89	43		0	95	Y	N	Y		
van der Hoek <i>et al.</i> (2001)	Rural				0	57	N	N	Y		
Faecal coliforms – low bacteria counts (22 studies)											
Austin (1994)	Rural			100	0		Y	N	N		
Blum <i>et al.</i> (1990)	Rural	14	75		100		Y	N	Y	B	
Drangert (1993)	Rural		100	100	55	86	N	N	N		
Genthe <i>et al.</i> (1997)	Urban	88	33	0	84	4	N	Y	Y		
Hammad & Dirar (1982)	Urban		0	100	100	0	N	N	Y		
Heinonen <i>et al.</i> (1988)	Rural				100	0	N	N	Y	A	
Kefauver (2000)	Rural	33	89	2	49	0	Y	N	N		
Knight <i>et al.</i> (1992)	Rural	69			100	44	N	Y	Y	B	
Lehmsuluoto (1986)	Rural				29	64	N	N	N		
Mertens <i>et al.</i> (1990)	Rural			58	69	92	N	Y	Y	E	
Molbak <i>et al.</i> (1989)	Mixed	20	54		66	47	N	Y	Y	A	
Morin <i>et al.</i> (1990)	Rural				100	37	N	N	N		
Platenburg & Zaki (1993)	Rural		0	100	100	64	Y	N	Y	A	
Potgieter 2000, personal communication	Rural	100	0	0	50	43	N	N	N		
Rajasekaran <i>et al.</i> (1977)	Rural				69	83	N	N	Y		
Schmitt <i>et al.</i> (1997)	Urban	100			100	0	N	Y	Y		
Shears <i>et al.</i> (1995)	Rural			100	59	88	N	N	Y		
Sutton & Mubiana (1989)	Rural		75	15	100	0	N	N	N		
Trevett (2003)	Rural		88	88	40	87	N	N	N		
Vanderslice & Briscoe (1993)	Urban	77		33	90	36	N	N	Y	B	
Verweij <i>et al.</i> (1991)	Rural	25		0	78	40	N	N	Y	B	
Woodhouse (1990)	Rural		100	0	100	0	N	N	N		
Total coliforms – low bacteria counts (11 studies)											
AQUAPOL	Rural	100	0	0	42	67	N	N	N		
Bandyopadhyay <i>et al.</i> (1992)	Urban				100	26	N	N	Y		
Empereur-Bissonnet <i>et al.</i> (1992)	Rural			100	100	0	Y	N	Y		
Genthe <i>et al.</i> (1997)	Urban	88	33	0	84	2	N	Y	Y		
Gunn <i>et al.</i> (1981)	Urban	100	75		100	0	N	Y	Y		
Hammad & Dirar (1982)	Urban		0	100	100	0	N	N	Y		
Lloyd-Evans <i>et al.</i> (1984)	Urban	100			100	0	N	Y	Y		
Morin <i>et al.</i> (1990) – first study	Rural				100	50	N	N	N		
Morin <i>et al.</i> (1990) – second study	Rural				100	62	N	N	N		
Sutton & Mubiana (1989)	Rural		75	15	100	60	Y	N	N		
Torun (1983)/Shiffman <i>et al.</i> (1978)	Rural	50			0	52	Y	N	Y		

J. Wright *et al.* Review of drinking water contamination

Table 1 Continued

Study	Setting						Design		Quality		Notes
	Urban/ rural	% with adequate sanitation	% with covered vessels	% with earthen- ware vessels	% with protected sources	% source samples contaminated	Intervention study	Sampling focuses on disease cases	Published in referred journal		
Faecal coliforms – high bacteria counts (11 studies)											
Feachem (1978)	Rural				100	1.1	N	N	N	C	
Jagals <i>et al.</i> (1997)	Urban	100	32	0	100	1.0	N	Y	Y		
Jagals <i>et al.</i> 1999	Urban	100	32	0	100	0.0	Y	N	Y		
Kaltenthaler <i>et al.</i> (1996)	Rural				75	4.0	N	N	Y	C	
Kirchhoff <i>et al.</i> (1985)	Rural	0		100	0	9.2	Y	N	Y		
Lindskog & Lindskog (1988)	Rural	75	53	40	41	4.6	Y	N	Y		
Mazengia <i>et al.</i> (2002)	Rural			0	0		Y	N	Y	C	
Musa <i>et al.</i> (1999)	Mixed		0	100	76	3.6	N	N	Y		
Ologe (1989)	Urban				100	0.2	Y	N	N		
Quick <i>et al.</i> (1996)	Urban	0	25	0	0	4.7	Y	N	Y		
Swerdlow <i>et al.</i> (1992)	Urban				100	1.4	N	Y	Y		
Total coliforms – high bacteria counts (five studies)											
Chidavaenzi <i>et al.</i> (1998)	Rural		52	0	100	7.2	Y	N	Y	C	
Jagals <i>et al.</i> (1997)	Urban	100	32	0	100	2.1	N	Y	Y		
Jagals <i>et al.</i> 1999	Urban	100	32	0	100	1.8	Y	N	Y		
Lindskog & Lindskog (1988)	Rural	75	53	40	41	6.4	Y	N	Y		
Swerdlow <i>et al.</i> (1992)	Urban				100	2.2	N	Y	Y		
Faecal coliforms – not analysed because of incomplete data (six studies)											
Esrey <i>et al.</i> (1986)	Rural		0	0	50		Y	N	N	I	
Han <i>et al.</i> (1989)	Urban				50		N	N	Y	D	
Oluwande (1980)*					100		Y	N	N	D	
Sandiford <i>et al.</i> (1989)	Rural				100		N	N	Y	G	
Tomkins <i>et al.</i> (1978)	Rural			100			N	N	Y	G	
Young & Briscoe (1988)	Rural	48	75		40		N	Y	Y	H	

A, lower limit of detection greater than one bacterium per 100 ml; B, sample size not specified at source, point-of-use or both. Lowest possible sample size used that could account for percentage of contaminated samples; C, arithmetic mean used to describe bacteria counts, so normal distribution assumed instead of log-normal distribution; D, no sample sizes or measures of dispersion provided for bacteria counts; E, excludes households boiling water; F, bacteria tested per 50 ml, not per 100 ml; G, number of source and/or point-of-use samples not specified; H, no measure of dispersion provided for bacteria counts; I, no measures of central tendency, means or samples sizes (passing reference to water contamination only); N, no; Y, yes.

\* Also included data on total coliforms.

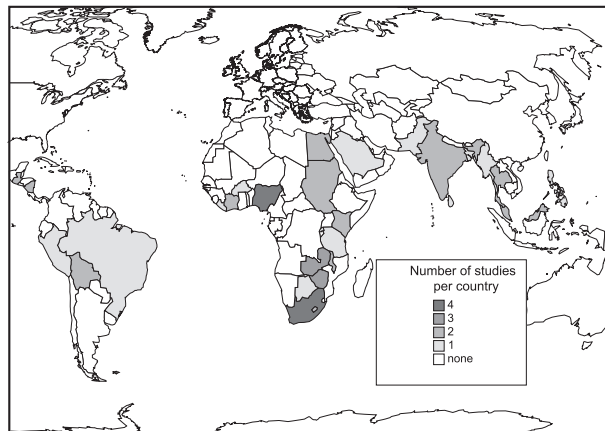
account for such differences. For each of the five groups of studies, we examined whether the study design, setting and quality characteristics described in (i) above could account for differences in contamination patterns. Meta-regression based on the method of restricted maximum likelihood was used to account for possible differences in the log odds ratios and standardized mean differences between the included studies (Thompson & Sharp 1999). Because significant heterogeneity was identified in (iv) above, a random effects regression model was used. This model assumes that the studies are not drawn from the same population.

We also tested for publication bias, which occurs where smaller studies are more likely to be published if their results are significant. In this context, studies based on limited numbers of water samples might be more likely to

be published when they showed significant deterioration in water quality from source to point-of-use. The resulting data sets were therefore tested for publication bias using Egger's test (Egger *et al.* 1997a).

### Study characteristics

We were unable to locate the original copies of three reports that may potentially present relevant data (Magnani *et al.* 1984; Mulugeta 1997; Handzel 1998). Table 1 shows the characteristics of the included studies, grouped according to the type of indicator bacteria. Several papers relating to faecal or total coliforms were not analysed statistically and are also included in Table 1. These studies were not analysed either because they did not report the number of water samples taken (Tomkins *et al.* 1978;



**Figure 1** Locations of studies of water contamination and household water treatment/storage interventions that were identified in the review.

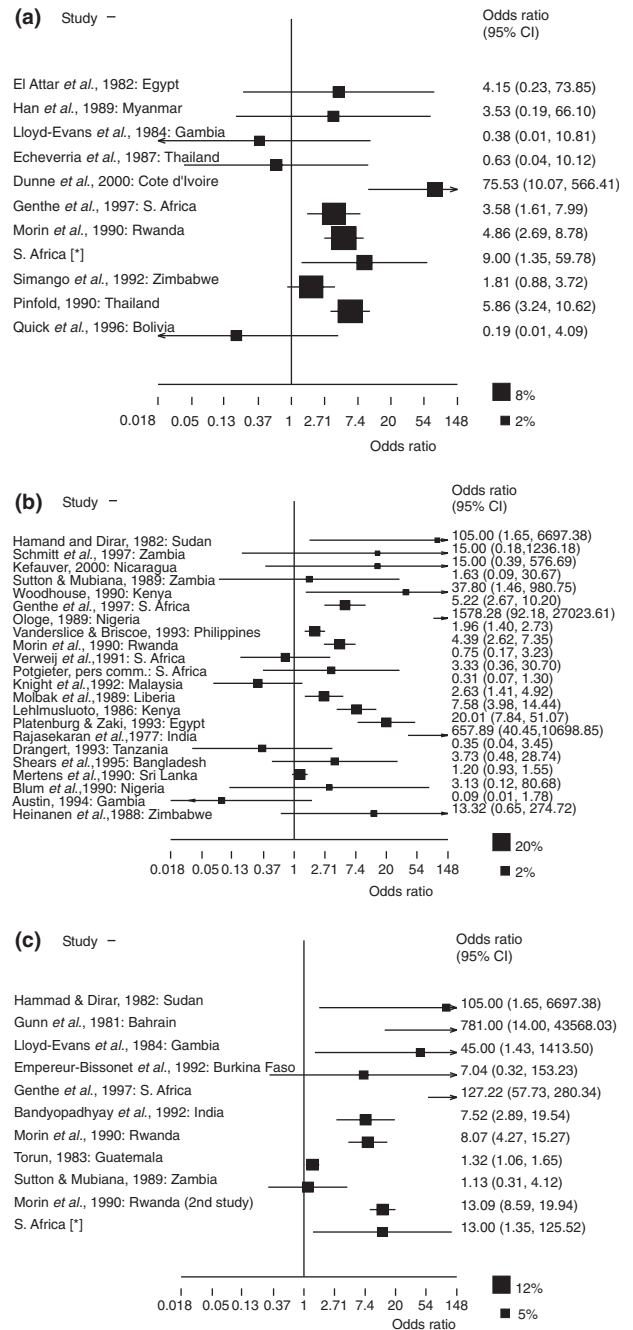
Oluwande 1980), measures of dispersion for bacteria counts (Young & Briscoe 1988; Han *et al.* 1989; Sandiford *et al.* 1989), or measures of central tendency (Esrey *et al.* 1986). In all cases, we were unable to obtain more details for these studies from the main authors.

Type of sanitation and type of water containers were reported in only a sub-set of the published studies. The identified studies took place in 30 different countries, as shown in Figure 1. Of 57 studies reviewed, only four took place in francophone Africa (Morin *et al.* 1990; Empeureur-Bissonnet *et al.* 1992; Angoran-Benie *et al.* 2000) Reller *et al.* 2001) and none in Portuguese-speaking Africa (although there may be studies published only in Portuguese from these countries).

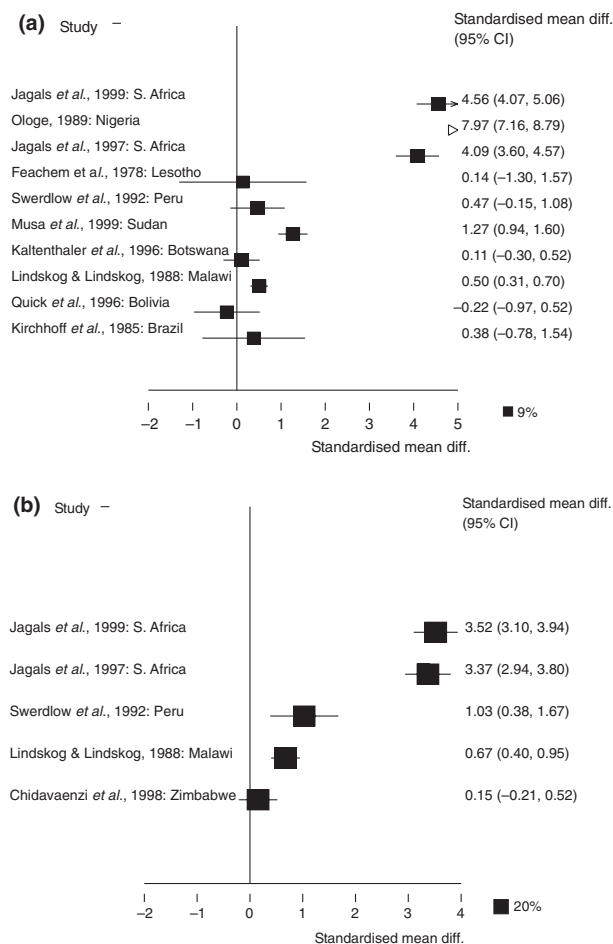
**Results**

**Variation in contamination between studies**

Figure 2a shows the odds ratios derived from the proportion of samples contaminated with *E. coli* at source and point-of-use [the ‘low bacteria count’ studies in (iii) above]. Figure 2b,c show the odds ratios for faecal and total coliforms. In Figure 2, odds ratios above 1 indicate that water quality is worse at point-of-use, whilst values below 1 indicate that it is worse at source. Figure 3 shows the standardised mean difference in faecal and total coliforms between source and point-of-use [the ‘high bacteria count’ studies in (iii) above]. Standardized mean differences above 1 indicate that water quality is worse at point-of-use, whilst values below 1 indicate that it is worse at source. In both Figures 2 and 3, the change in water quality



**Figure 2** Odds ratios derived from the proportion of samples at source and point-of-use testing positive for indicator bacteria: (a) *Escherichia coli*, (b) faecal coliforms and (c) total coliforms. Values <1 indicate better water quality at point-of-use; values >1 indicate better water quality at source. The box symbols indicate the weight given to each study and studies have been sorted according to the percentage of contaminated source samples. Numbers are references for each study and \* indicates our own unpublished data.

J. Wright *et al.* Review of drinking water contamination

**Figure 3** Standardized differences derived from the mean and standard deviation of logged indicator bacteria counts at source and point-of-use for (a) faecal coliforms and (b) total coliforms. Values  $<0$  indicate better water quality at point-of-use; values  $>0$  indicate better water quality at source. Both graphs have been sorted by the geometric mean bacteria counts at source. Numbers are references for each study.

recorded in a study is significant if the error bars do not pass through 1.

Figures 2 and 3 suggest that the proportion of contaminated samples and geometric mean bacteria count were significantly greater at point-of-use in approximately half of the studies reviewed. Regardless of the indicator bacteria, there were no studies where the geometric mean bacteria count or proportion of contaminated samples was significantly lower at point-of-use.

Small-scale studies showing significant levels of contamination between source and point-of-use were no more likely to be published than those showing no significant contamination. This was evident from Egger's

test, which was not significant for any bacteriological indicator.

The heterogeneity test suggested that there was significant variability between different studies for all three types of indicator bacteria and both statistical measures of contamination between source and point-of-use.

Table 2 shows the meta-regression results for the three types of indicator bacteria for 'high' and 'low bacteria count' settings. In each case, the regression model that explained the greatest amount of variation between studies is presented. In a bivariate meta-regression analysis, study quality, as measured by publication in a refereed journal, was not significantly related to the change in water quality for any of the indicator bacteria. Consequently, studies published in refereed journals were pooled with 11 studies published elsewhere in the meta-regression analysis shown in Table 2.

For *E. coli*, the variation between study results was not explained by any of the study setting, design or quality characteristics. For 'low bacteria count' studies of faecal coliforms, all of the variation between study results was explained by the proportion of households using covered water storage vessels.

For the 'high bacteria count' studies of both total and faecal coliforms, contamination after collection was significantly higher when the geometric mean bacteria count for source water was low. The percentage of contaminated source samples was also associated with higher levels of contamination for 'low bacteria count' studies of total coliforms. This can be seen from Figures 2c and 3 in which study results have been ordered according to the level of source contamination. Studies with safe water sources appear at the top of these figures and poorer quality sources at the bottom. Water quality deterioration from source to point-of-use, as measured by the standardized mean difference or log odds ratio, is greater for the studies of uncontaminated water sources. The total coliform studies with good quality source water were generally in urban settings and most were designed to sample households with disease cases more intensively. Consequently, both these variables were also significantly related to higher levels of contamination when entered into separate regression models for total coliforms.

## Discussion

### Water contamination between source and point-of-use

Most observational studies of change in the microbiological quality of water at source and point-of-use indicate a decline after collection, although there is significant

**Table 2** Meta-regression results for studies of microbiological water quality at source and point-of-use

Indicator bacteria	General level of water quality	Study characteristic(s) in best model	Number of studies	Co-efficient	% of heterogeneity explained	Residual heterogeneity ( $\tau^2$ )
<i>Escherichia coli</i>	Low bacteria counts	–	14			
Faecal coliforms	Low bacteria counts	Proportion using covered water vessels	11	–2.08*	100	0
Total coliforms	Low bacteria counts	Percentage of contaminated source samples	11	–4.548*	48	1.26
Faecal coliforms	High bacteria counts	Geometric mean bacteria count at source	10	–0.581†	30	5.07
Total coliforms	High bacteria counts	Geometric mean bacteria count at source	5	–0.491†	57	1.053

\* Indicates co-efficient significant at the 99% level.

† Indicates a co-efficient significant at the 95% level.

$\tau^2$  is an estimate of the between-studies variance, having adjusted for the study characteristics shown in the table. This estimate assumes that the residual errors are normally distributed. The percentage of heterogeneity explained indicates the reduction in between-studies variance after adjusting for the study characteristics.

variation between settings. The results in Figures 2 and 3 suggest that approximately half of the included studies identified significant contamination after collection. There were no instances where microbiological water quality improved significantly after collection. The decline in water quality between source and point-of-use measured in terms of faecal and total coliforms is proportionately greater where source water is largely uncontaminated. These are often 'improved' water sources, such as wells and communal standpipes. For such sources, safer household water storage (Chidavaenzi *et al.* 1998) may be an appropriate additional intervention to prevent contamination of domestic water. If water testing is performed only at sources in such settings, then results of monitoring may not reflect the quality of water actually consumed in the home.

The percentage of point-of-use samples contaminated with faecal coliforms was also lower where households generally covered their water containers. This reduction in contamination by covering vessels implicates hands and cups being dipped in water as a probable source of contamination. This observation is supported by intervention studies, which have found that covered vessels reduce faecal and total coliform counts in stored water by 50% (Chidavaenzi *et al.* 1998; Mazengia *et al.* 2002).

Our review assessed the aggregate, community-level changes in water quality across multiple households and not water quality changes at the individual household level. It should be borne in mind that even where the typical household experiences poorer water quality at point-of-use, there are likely to be a minority of households that do not conform to this general trend within a population. For

example, Vanderslice and Briscoe (1993) found that water quality actually improved between source and point-of-use for 16% of households in their study, although the majority experienced the opposite trend.

Nearly all studies used total coliforms, faecal coliforms or *E. coli* as an indicator of faecal contamination, reflecting available water testing technology in most developing countries. Of these indicator bacteria, *E. coli* are regarded as the most reliable measure of public health risks in drinking water (Edberg *et al.* 2000). Total coliforms can originate from decaying vegetation in tropical areas and do not necessarily indicate the presence of pathogens in water. Similarly, faecal coliforms are now often referred to as 'thermo-tolerant' coliforms because many may be non-faecal in origin. In our analysis, the most useful indicator of faecal contamination in point-of-use water, *E. coli*, was thus the least predictable.

### Methodological problems

It is possible that the studies reviewed here may be subject to two types of systematic bias. One possibility is that subjects, on realising that water samples are being taken from neighbouring homes, modify their behaviour accordingly and become more careful in their handling and storage of water. Such a change in behaviour would mean that the studies here systematically underestimate the extent of contamination after collection. Secondly, the studies reviewed here are generally based on two sets of samples, those taken in the home and those taken at source. The source for each household is often identified by asking a subject about the water sources used that day. Our



J. Wright *et al.* **Review of drinking water contamination**

own recent fieldwork in Zimbabwe suggests that study subjects may be reluctant to admit to using an unprotected source, as they realise that such sources are regarded as hazardous to health. In this event, where subjects claim to use protected sources but are actually drawing water from unprotected sources, the extent of post-collection contamination is likely to be overestimated. Furthermore, the recommended sterilization of taps and boreholes by 'burning off' can lead to an underestimate of source contamination that may occur as water is pumped (Mertens *et al.* 1990).

The number of study characteristics examined in this review was limited by the findings reported in the literature. There may be other unreported, confounding factors in communities using safer sources (e.g. higher population densities and greater overcrowding) that could account for greater contamination of stored water there. In some studies, it was also unclear whether the number of samples taken from different source types reflected the number of households using each source type. This would also affect estimates of water quality change between source and point-of-use. Furthermore, sample sizes and measures of dispersion (e.g. geometric standard deviations) for coliform distributions need to be documented when reporting results. Without such key information, omitted in several papers reviewed here, comparison of findings between studies is difficult.

**Future research**

It is clear that the microbiological processes occurring within the transport and storage vessels are complex, given the interaction of the biota in the collected water with biofilms in the containers and/or recontamination through dipping hands and cups into containers. Future research is required to understand these processes in more detail and also to assess how the storage period affects point-of-use water quality. We also recommend that future studies record turbidity as this may indicate the presence of organic matter, a major influence on regrowth or die-off of micro-organisms. Given that total and faecal coliforms are no longer regarded as reliable indicators of faecal contamination, it is also recommended that *E. coli* be assayed in future studies of recontamination of domestic drinking water.

**Conclusions**

Microbiological contamination of water between source and point-of-use is widespread and often significant. Increased faecal and total coliform counts in stored domestic water are especially found in urban areas with uncontaminated supplies. The results imply that samples

taken from storage vessels may provide a better reflection of the quality of water consumed than source samples, particularly in urban areas with safe water sources. Given these findings, future research is required into ways to combat such contamination at point-of-use if the health benefits of improved sources are not to be compromised.

**Acknowledgements**

This research was funded by the European Union INCO-DEV programme (contract no. ICA4-CT-2000-30039). The authors wish to acknowledge the assistance of Dr Prabhat Vaze of the Office for National Statistics for technical guidance and Kevin Murray for comments on chemical analysis of water samples. We also acknowledge Misheck Kirimi of the Network for Water and Sanitation International (Kenya), Kirsty Forbes and Hannah Bird for their assistance in compiling literature. The authors also wish to acknowledge the assistance of numerous authors contacted, who provided further information for the review here and comments by two anonymous reviewers.

**References**

- Angoran-Benie Y, Sibailly TS, Kamelan-Tano Y *et al.* (2000) Implications of household water practices on replacement feeding of children born to HIV-infected women, Abidjan, Cote d'Ivoire. In: *13th International AIDS Conference*, Durban, South Africa, July 9th. Monitoring South Africa, Durban, 129–131.
- Austin CJ (1994) Chlorinating household water in the Gambia. In: *Proceedings of the 20th WEDC Conference*, Colombo, Sri Lanka (eds J Pickford, P Barker, A Coad, M Ince, R Shaw & B Skinner) WEDC, Loughborough, pp. 151–153.
- Bandyopadhyay S, Banerjee K, Khanna KK, Sharma RS & Verghese T (1992) Drinking water quality and diarrhoea in Delhi. *The Journal of Communicable Diseases* **24**, 156–158.
- Blum D, Emeh RN, Huttly SR *et al.* (1990) The Imo state (Nigeria) drinking water supply and sanitation project, 1. Description of the project, evaluation methods, and impact on intervening variables. *Transactions of the Royal Society Tropical Medicine and Hygiene* **84**, 309–315.
- Chidavaenzi MT, Jere M, Nhandara C, Chingundury D & Bradley M (1998) An evaluation of water urns to maintain domestic water quality. *24th WEDC Conference*, Islamabad, Pakistan. (ed. J Pickford) WEDC, Loughborough, pp. 249–253.
- Drangert J (1993) *Who Cares About Water? Household Water Development in Sukumaland, Tanzania*. Linköping University, Linköping.
- Dunne E, Angoran Y, Kamelan-Tano K *et al.* (2000) Is drinking water in Abidjan, Cote d'Ivoire safe for infant formula?

J. Wright *et al.* **Review of drinking water contamination**

- 49th Annual EIS Conference, Atlanta, Georgia. Epidemic Intelligence Service, Atlanta, Georgia, pp. 25–28.
- Echeverria P, Taylor DN, Seriwatana J *et al.* (1987) Potential sources of enterotoxigenic *Escherichia coli* in homes of children with diarrhea in Thailand. *Bulletin of the World Health Organization* **65**, 207–215.
- Edberg SC, Rice EW, Karlin RJ, & Allen MJ (2000) *Escherichia coli*: the best biological drinking water indicator for public health protection. *Journal of Applied Microbiology* **88**, 106S–116S.
- Egger M, Smith GD, Schneider M & Minder C (1997a) Bias in meta-analysis detected by a simple, graphical test. *British Medical Journal* **315**, 629–634.
- Egger M, Smith GD & Phillips AN (1997b) Meta-analysis: principles and procedures. *British Medical Journal* **315**, 1533–1537.
- Egger M, Schneider M & Smith GD (1998) Meta-analysis spurious precision? Meta-analysis of observational studies. *British Medical Journal* **316**, 140–144.
- El Attar L, Abdel GA, Khairy AE & El Sebaie O (1982) The sanitary condition of rural drinking water in a Nile Delta village. II. Bacterial contamination of drinking water in a Nile Delta village. *Journal of Hygiene (London)* **88**, 63–67.
- Empereur-Bissonnet P, Salzman V & Monjour L (1992) Application d'un nouveau materiel de transport et de stockage pour l'amelioration de la qualite de l'eau de boisson en milieu rural africain. *Bulletin du Societe Pathologie Exotique* **85**, 390–394.
- Esrey S, Habicht JP, Casella G *et al.* (1986) Infection, diarrhoea, and growth rates of young children following the installation of village water supplies in Lesotho. In: *Proceedings of the International Symposium on Water-related Health Issues*, American Water Resources Association, Atlanta, GA, pp. 11–16.
- Feachem RG (1978) *Water, Health and Development*. Tri-med Books, London.
- Genthe B, Strauss N, Seager J, Vundule C, Maforah F & Kfir R (1997) The effect of type of water supply on water quality in a developing community in South Africa. *Water Science and Technology* **35**, 35–40.
- Gunn RA, Kimball AM, Mathew PP, Dutta SR & Rifaat AH (1981) Cholera in Bahrain: epidemiological characteristics of an outbreak. *Bulletin of the World Health Organization* **59**, 61–66.
- Hammad ZH & Dirar HA (1982) Microbiological examination of sebel water. *Applied and Environmental Microbiology* **43**, 1238–1243.
- Han AM, Oo KN, Midorikawa Y & Shwe S (1989) Contamination of drinking water during collection and storage. *Tropical and Geographical Medicine* **41**, 138–140.
- Handzel T (1998) The effect of improved drinking water quality on the risk of diarrhoeal disease in an urban slum of Dhaka, Bangladesh: a home chlorination intervention trial. PhD Thesis, University of North Carolina.
- Heinonen A, Chandiwana SK, Makura O, Chimbari M & Bradley M (1988) Faecal contamination of rural drinking water in a commercial farming area of Zimbabwe. *The Central African Journal of Medicine* **34**, 253–259.
- der Hoek W, Konradsen F, Ensink JHJ, Mudasser M & Jensen PK (2001) Irrigation water as a source of drinking water: is safe use possible? *Tropical Medicine & International Health* **6**, 46–54.
- Jagals P, Grabow W & Williams E (1997) The effects of supplied water quality on human health in an urban development with limited basic subsistence facilities. *Water SA* **23**, 373–378.
- Jagals P, Bokako T & Grabow W (1999) Changing consumer water-use patterns and their effect on microbiological water quality as a result of an engineering intervention. *Water SA* **25**, 297–300.
- Kaltenthaler EC, Drasar BS & Potter CW (1996) The use of microbiology in the study of hygiene behaviour. *Microbios* **88**, 35–43.
- Kefauver J (2000) *Solar Water Disinfection Project: Matagalpa Region, Nicaragua*. Agency for Environmental Health, Green Bay, WI.
- Kirchhoff LV, McClelland KE, Do Carmo PM, Araujo JG, de Sousa MA & Guerrant RL (1985) Feasibility and efficacy of in-home water chlorination in rural North-eastern Brazil. *Journal of Hygiene (London)* **94**, 173–180.
- Knight SM, Toodayan W, Caique WC, Kyi W, Barnes A & Desmarchelier P (1992) Risk factors for the transmission of diarrhoea in children: a case-control study in rural Malaysia. *International Journal of Epidemiology* **21**, 812–818.
- Lehmsuluoto M (1986) Contamination of potable water in rural areas: should it be systematically monitored as part of impact management of various interventions? In: *Proceedings of World Water '86: Water Technology for the Developing World*. London, Thomas Telford, pp. 41–42.
- Lindskog RU & Lindskog PA (1988) Bacteriological contamination of water in rural areas: an intervention study from Malawi. *Journal of Tropical Medicine and Hygiene* **91**, 1–7.
- Lloyd-Evans N, Pickering HA, Goh SG & Rowland MG (1984) Food and water hygiene and diarrhoea in young Gambian children: a limited case control study. *Transactions of the Royal Society Tropical Medicine and Hygiene* **78**, 209–211.
- Magnani R, Tourkin S & Hartz M (1984) *Evaluation of the Provincial Water Project in the Philippines*. US Department of Commerce, Washington, DC.
- Mazengia MS, Chidavaenzi M, Bradley M *et al.* (2002) Effective and culturally acceptable water storage in Zimbabwe: maintaining the quality of water abstracted from upgraded family wells. *Journal of Environmental Health* **64**, 15–18.
- Mertens TE, Fernando MA, Marshall TF, Kirkwood BR, Cairncross S & Radałowicz A (1990) Determinants of water quality, availability and use in Kurunegala, Sri Lanka. *Tropical Medicine and Parasitology* **41**, 89–97.
- Mintz ED, Reiff FM & Tauxe RV (1995) Safe water treatment and storage in the home. A practical new strategy to prevent waterborne disease. *JAMA* **273**, 948–953.
- Molbak K, Hojlyng N, Jepsen S & Gaarslev K (1989) Bacterial contamination of stored water and stored food: a potential

J. Wright *et al.* **Review of drinking water contamination**

- source of diarrhoeal disease in West Africa. *Epidemiology and Infection* **102**, 309–316.
- Momba MNB & Notshe TL (2003) The microbiological quality of groundwater-derived drinking water after long storage in household containers in a rural community of South Africa. *Journal of Water Supply Research & Technology AQUA* **52**, 67–77.
- Morin R, Jost P & Spruijt H (1990) Health benefits of water and sanitation in Rwanda. *Water Quality Bulletin* **15**, 29–35.
- Mulugeta T (1997) Survey on practices of water handling and level of contamination between the source and use in the homes. BSc Thesis, Jimma Institute of Health Sciences.
- Musa HA, Shears P, Kafi S & Elsabag SK (1999) Water quality and public health in northern Sudan: a study of rural and peri-urban communities. *Journal of Applied Microbiology* **87**, 676–682.
- Ologe JO (1989) Household water in rural Kwara. In: *Water, Engineering and Development in Africa: Proceedings of the 15th WEDC Conference*. WEDC, Loughborough, pp. 96–99.
- Oluwande PA (1980) Public health implications of chemical and bacteriological characteristics of treated water in Western State of Nigeria. *Nigerian Medical Journal* **7**, 86–90.
- Pinfold JV (1990) Faecal contamination of water and fingertip-rinses as a method for evaluating the effect of low-cost water supply and sanitation activities on faeco-oral disease transmission. I. A case study in rural north-east Thailand. *Epidemiology and Infection* **105**, 363–375.
- Platenburg R & Zaki M (1993) Patterns of water quality in rural areas of Assiut Governorate, Egypt. *Water Science and Technology* **27**, 55–65.
- Quick RE, Venczel LV, Gonzalez O *et al.* (1996) Narrow-mouthed water storage vessels and in situ chlorination in a Bolivian community: a simple method to improve drinking water quality. *The American Journal of Tropical Medicine and Hygiene* **54**, 511–516.
- Quick RE, Kimura A, Thevos A *et al.* (2002) Diarrhea prevention through household-level water disinfection and safe storage in Zambia. *American Journal of Tropical Medicine and Hygiene* **66**, 584–589.
- Rajasekaran P, Dutt PR & Pisharoti KA (1977) Impact of water supply on the incidence of diarrhoea and shigellosis among children in rural communities in Madurai. *The Indian Journal of Medical Research* **66**, 189–199.
- Reller ME, Mong YJM, Hoekstra RM & Quick RE (2001) Cholera prevention with traditional and novel water treatment methods: an outbreak investigation in Fort-Dauphin, Madagascar. *American Journal of Public Health* **91**, 1608–1610.
- Roberts L, Chartier Y, Chartier O, Malenga G, Toole M & Rodka H (2001) Keeping clean water clean in a Malawi refugee camp: a randomized intervention trial. *Bulletin of the World Health Organisation* **79**, 280–287.
- Sandiford P, Gorter AC, Smith GD & Pauw JP (1989) Determinants of drinking water quality in rural Nicaragua. *Epidemiology and Infection* **102**, 429–438.
- Schmitt R, Bryan FL, Jermini M *et al.* (1997) Hazards and critical control points of food preparation in homes in which persons had diarrhea in Zambia. *Journal of Food Protection* **60**, 161–171.
- Shears P, Hussein MA, Chowdhury AH & Mamun KZ (1995) Water sources and environmental transmission of multiply resistant enteric bacteria in rural Bangladesh. *Annals of Tropical Medicine and Parasitology* **89**, 297–303.
- Shiffman M, Schneider R, Faigenblum J, Helms R & Turner A (1978) Field studies on water, sanitation, and health education in relation to health status in central America. *Progress in Water Technology* **11**, 143–150.
- Simango C, Dindiwe J & Rukure G (1992) Bacterial contamination of food and household stored drinking water in a farm-worker community in Zimbabwe. *The Central African Journal of Medicine* **38**, 143–149.
- Sutton S & Mubiana D (1989) Household water quality in rural Zambia. *Waterlines* **8**, 20–21.
- Swerdlow DL, Mintz ED, Rodriguez M *et al.* (1992) Waterborne transmission of epidemic cholera in Trujillo, Peru: lessons for a continent at risk. *Lancet* **340**, 28–33.
- Thompson SG & Sharp SJ (1999) Explaining heterogeneity in meta-analysis: a comparison of methods. *Statistics Medicine* **18**, 2693–2708.
- Tomkins AM, Drasar BS, Bradley AK & Williamson WA (1978) Water supply and nutritional status in rural northern Nigeria. *Transactions of the Royal Society Tropical Medicine and Hygiene* **72**, 239–243.
- Torun B (1983) Environmental and educational interventions against diarrhoea in Guatemala. In: *Diarrhoea and Malnutrition: Interactions, Mechanisms and Interventions* (eds LC Chen & NS Scrimshaw) Plenum Press, New York, pp. 235–266.
- Trevett A (2003) The public health significance of drinking-water quality deterioration in rural Honduran communities. PhD Thesis, Silsoe College, Cranfield University.
- Van Zijl WJ (1966) Studies on diarrhoeal diseases in seven countries by the WHO Diarrhoeal Diseases Advisory Team. *Bulletin of the World Health Organisation* **35**, 249–261.
- Vanderslice J & Briscoe J (1993) All coliforms are not created equal – a comparison of the effects of water source and in-house water contamination on infantile diarrheal disease. *Water Resources Research* **29**, 1983–1995.
- Verweij PE, van Egmond M, Bac DJ, van der Schroeff JG & Mouton RP (1991) Hygiene, skin infections and types of water supply in Venda, South Africa. *Transactions of the Royal Society Tropical Medicine and Hygiene* **85**, 681–684.
- WHO (1997) *Guidelines for Drinking Water Quality Vol. 3: Surveillance and Control of Community Supplies*. World Health Organisation, Geneva.
- WHO (2002) *The World Health Report 2002*. World Health Organisation, Geneva.
- Woodhouse M (1990) Consumer involvement in bacteriological testing of well water in Kibwezi, Kenya. *Waterlines* **8**, 3–5.
- Young B & Briscoe J (1988) A case-control study of the effect of environmental sanitation on diarrhoea morbidity in Malawi. *Journal of Epidemiology and Community Health* **42**, 83–88.

J. Wright *et al.* **Review of drinking water contamination**

**Authors**

**Dr Jim Wright** (corresponding author) and **Dr Stephen Gundry**, Water and Environmental Management Research Centre, University of Bristol, 83 Woodland Road, Bristol BS8 1US, UK. Tel.: +44 117 954 5289; Fax: +44 117 954 5389;  
E-mail: james.wright@bristol.ac.uk, stephen.gundry@bristol.ac.uk

**Mr Ronan Conroy**, Department of Epidemiology and Public Health Medicine, Royal College of Surgeons in Ireland, Mercer Building, Mercer Street Lower, Dublin 2, Ireland. E-mail: rconroy@rcsi.ie