



**WHO / UNICEF**

**Joint Monitoring Programme  
for Water Supply and Sanitation**

Coverage Estimates  
**Improved Sanitation**

Updated in June 2006

---

**Kenya**

---

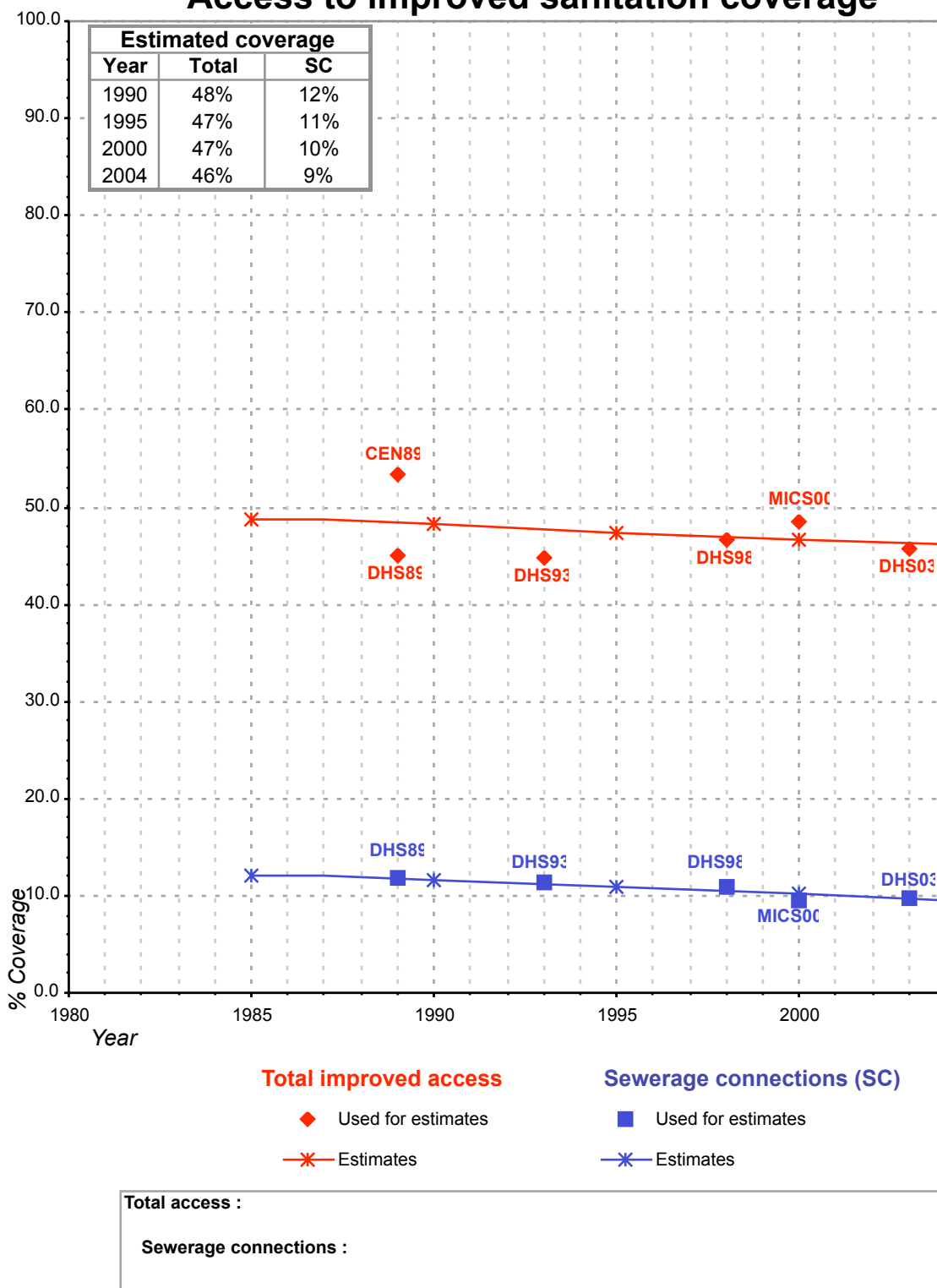
Urban and Rural Sanitation - Kenya

Survey						Census			Estimate																				
DHS		DHS		DHS		MICS		DHS				CENSUS			FORM6/WHO														
								2003				1999			1999														
												1999			1999														
SANITATION		SANITATION		SANITATION		SANITATION		SANITATION				SANITATION			SANITATION														
Urban		Urban		Urban		Urban		Urban				Urban			Urban														
Rural		Rural		Rural		Rural		Rural				Rural			Rural														
Flush Toilet*	46.7	1.3	Own Flush Toilet	23.5	1.1	Own Flush Toilet	24.7	1.5	Flush to sewerage/septic tank	38.1	6	Flush toilet	39	55.0%	1.7	84.8%	Private domestic connection to sewerage system	10.2	0.9	Main Sewer*	1'109	70	Population served with household connections to conventional sewers	1716	94				
Pit Latrine**	47.6	80.4	Shared Flush Toilet	21.4	0.5	Shared Flush Toilet	18.3	0.6	Pour flush latrine	6.9	0.4	VIP latrine	11.7	16.9%	7.3	66.1%	Shared domestic connection to sewerage system	26.1	0.5	Pit Latrine**	2'202	12'826	Population served with household connections but served with adequate, private or shared on-site system	2'253	19'131				
No Facilities	3.4	0.4	Traditional Pit Toilet**	42.3	71.4	Traditional Pit Toilet	42.3	73.3	Improved pit latrine	6.9	0.4	Traditional pit toilet	44.2	18.0%	70.3	59.3%	Private flush to septic tank	1.4	0.7	Bush	136	4361	Total population served	5'866	19'226				
Bucket	1.9	1.1	VIP	6.9	6.9	Ventilated Improved Pit	10.7	5.7	Traditional pit latrine**	45.4	64	No facility/bush/field	3.7		20.4		Shared flush to septic tank	2.9	0.6	Other	414	599	Total population unserved	159	4'393				
Other	0.1	0.1	No Facilities/Bush	2.1	20.3	No Facilities	2.6	18.6	Open pit	2.6	6	Other	1.2		0.1		Private pour flush latrine	1.1	0.2										
Missing	0.4	16.7	Other	3	0.3	Other	1	0.1	Bucket	0.8	0.0	Missing	0.2		0.2		Shared pour flush latrine	5.3	0.1										
			Missing info	0.9	0.5	Missing info	0.3	0.3	Other	0.3	0.1							Private covered dry latrine (with privacy)	7.1	49.4									
									No facilities/ bush/ field	1.3	17.2							Shared covered dry latrine (with privacy)	42.2	26.9									
TOTAL	100.0	100.0	TOTAL	100	100	TOTAL	100	100	TOTAL	100	100	TOTAL	100	29.1%	100	59.6%													
based on ratio DHS03 and DHS03	1.3	4.1	Estimated private VIP latrines based on ratio DHS03	1.3	3.9	Estimated private VIP latrines based on ratio DHS03	2.0	3.8	Estimated private VIP latrines based on ratio DHS03	1.3	4.2	VIP latrine not shared, based on private facilities analysis (DHS03)	2.2		4.8		Uncovered dry latrine (without privacy)	2.6	10.8	Total Population	3'864	17'885	Total population	6'128	23'618				
adjusted based on DHS '93 estimates	24.4	0.9	Ratio VIP/all latrines	0.14	0.08	Ratio VIP/all latrines	0.14	0.08	Ratio VIP/all latrines	0.14	0.08	Flush toilets not shared, based on private facilities analysis (DHS03)	21.5		1.4		Bucket latrine (where fresh excreta are manually removed)	0.0	0.0	Estimated VIP latrines based on ratio DHS03	309	964							
Traditional pit toilet - open pit based on ratio MICS2000	38.7	67.9	Ratio Own Flush/Total Flush	0.52	0.69	Ratio Own Flush/Total Flush	0.57	0.71	Ratio Own Flush/Total Flush	0.57	0.71	50 % of traditional pit toilet considered improved	22.1		35.2		No facilities (open defecation)	1.1	9.0	Estimated VLP latrines not shared based on ratio DHS03	68	637							
50 % of traditional pit toilet considered improved	19.3	34.0	Traditional pit toilet - open pit based on ratio MICS2000	40.0	65.3	Traditional pit toilet - open pit based on ratio MICS2000	40.0	67.0	Traditional pit toilet - open pit based on ratio MICS2000	40.0	67.0	50 % of traditional pit toilet considered improved	22.7		32.0		Other	0.0	0.9	Traditional pit toilet - open pit based on ratio MICS2000	1791	11031							
			50 % of traditional pit toilet considered improved	20.0	32.6	50 % of traditional pit toilet considered improved	20.0	33.5	50 % of traditional pit toilet considered improved	20.0	33.5						TOTAL	100.0	100.0	50 % of traditional pit toilet considered improved	895.3	6515.3							
Access to improved sanitation	45%	39%	Access to improved sanitation	45%	38%	Access to improved sanitation	47%	39%	Access to improved sanitation	49%	41%	Access to improved sanitation	46%		41%		Ratio own flush to sewerage/all flush	0.25	0.34	Access to improved sanitation	53%	35%	Access to improved sanitation	97%	81%				
Estimation of private House connections, based on WHS03	12%	0%	Estimation of private House connections, based on WHS03	11%	1%	Estimation of private House connections, based on WHS03	11%	1%	Estimation of private House connections, based on WHS03	10%	2%	Estimation of private House connections, based on WHS03	10%		1%		Ratio of own flush to sewerage/down flush	0.80	0.49	Estimation of private House connections	0%	0%	Estimation of private House connections	15%	0%				
																	Ratio of private connection to sewerage/all sewerage	0.28	0.67										
																	Ratio of private covered latrine among dry latrines	0.14	0.57										
																	Ratio of private among covered latrines	0.14	0.65										
																	% Private improved sanitation	28%	51%										
																	% Private sewerage connections	10%	1%										

\* DHS has a new question about shared facilities with other households

Kenya			SANITATION							
			URBAN				RURAL			
			HC		Total		HC		Total	
Source	Code	Year	Used for estimates	Not used for estimates	Used for estimates	Not used for estimates	Used for estimates	Not used for estimates	Used for estimates	Not used for estimates
The International Drinking Water Supply and Sanitation Decade. Review of National Baseline Data (as at December 1980). WHO 1984	WHO80	1980		49.0		89.0				19.0
The International Drinking Water Supply and Sanitation Decade. Review of National Progress (as at December 1983). WHO 1986.	WHO83	1983		49.0		75.0				39.0
Kenyan Demographic and Health Survey 1989.	DHS89	1989	11.7		45.0		0.4		38.9	
Kenyan National Census, 1989.	CEN89	1989			53.4				35.4	
Kenyan Demographic and Health Survey 1993.	DHS93	1993	11.3		44.8		0.5		37.6	
Water Supply and Sanitation Sector Monitoring Report - 1996. Sector Status as of 31 December 1994. WHO/UNICEF 1996.	JMP96	1993				69.0				81.0
Kenyan Demographic and Health Survey 1998	DHS98	1998	10.8		46.7		0.7		38.8	
Global Water Supply and Sanitation Assessment 2000. Water Supply and Sanitation Sector Questionnaire - 1999. (Form 6 sent to WHO)	JMP99	1999		14.7		97.0		0.3		81.0
Kenya Multiple Indicator Cluster Survey 2000, Preliminary Report, December 2000	MICS00	2000	9.6		48.6		2.0		40.8	
Kenia Demographic and Health Survey 2003.	DHS03	2003	9.8		45.8		0.6		41.4	
World Health Survey, WHO, 2003.	WHS04	2004		10.2		19.8		0.9		51.2

# Kenya - urban - Access to improved sanitation coverage



# Kenya - rural - Access to improved sanitation coverage

